

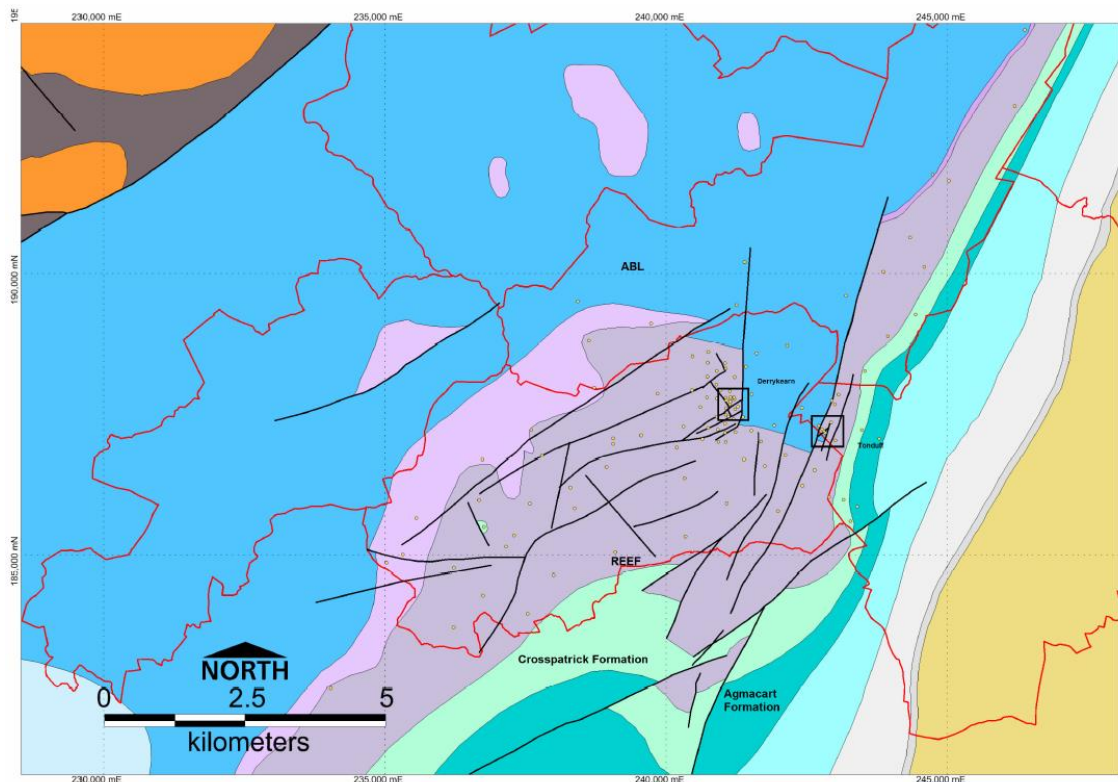
DERRYKEARN ZINC PROJECT

Arkle Reosurces has commissioned compilation of historic data focused on PL 1650, which lies at the centre of the block.

Geophysical data includes electromagnetic induction and induced polarisation surveys. The geochemical data from soils and deep overburden sampling includes over 900 data points with a full suite of geochemical assays, plus another 5100 plus Zn-Pb-Cu assays from older generations of surveys.

The lithological and sampling data from more than 80 holes representing a total meterage of over 9,000 metres of diamond drilling is being reappraised with a view to generating new targets.

Of particular interest is the lowest non-argillaceous carbonate unit in the stratigraphy, the Lisduff Oolite, at Derrykearn and remains untested by diamond drilling. At Lisheen, resource-grade mineralization was hosted within the Lisduff Oolite.



Historic drill collars - testing base of Waulsortian (contiguous licences in red outline)