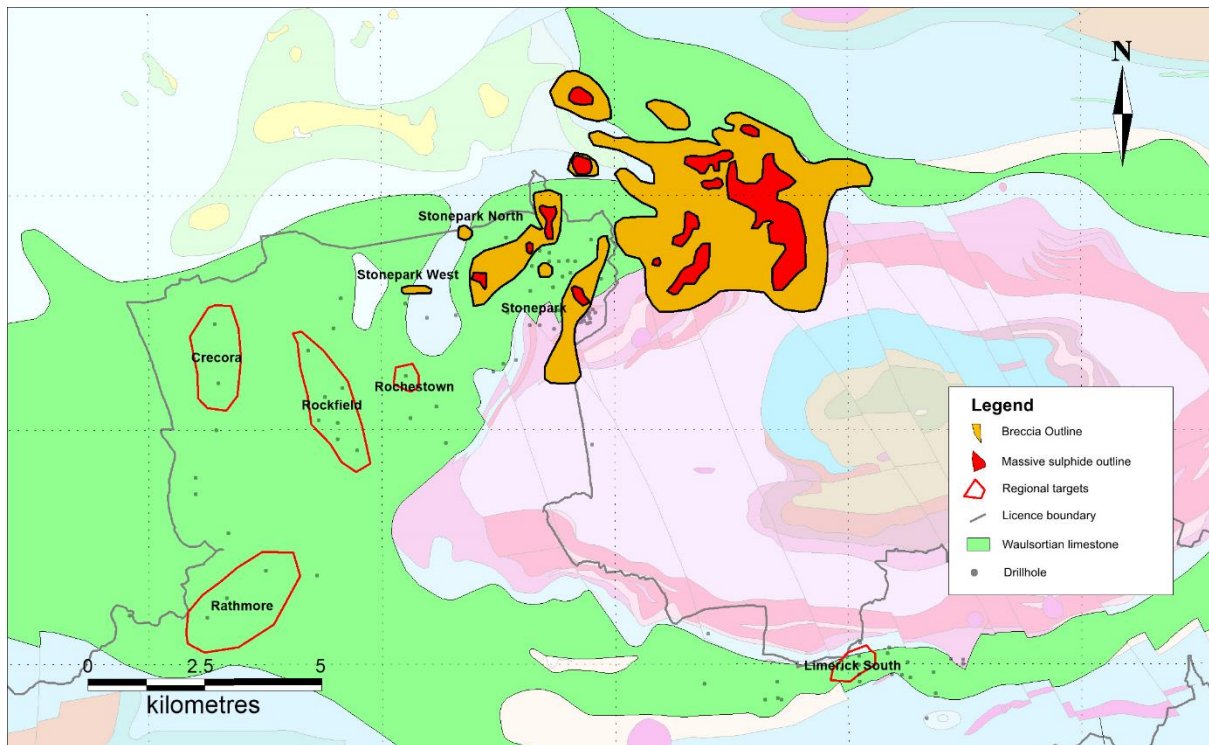


## STONEPARK ZINC PROJECT

The Stonepark Zinc Project comprises six contiguous prospecting licences in County Limerick, Ireland. The licence block is located in a highly prospective area for base metal mineralisation and is nearby the Tobermalug and Caherconlish zinc discoveries at Pallas Green, where Glencore have established a JORC-compliant Resource of 45.1 million tonnes of 7% zinc and 1% lead in the Inferred Category (Glencore – Resources & Reserves 2018).



Massive Sulphide and Breccia Outlines at Stonepark, Pallas Green (Blaney & Redmond 2015)

The Stonepark Project Joint Venture (known as TILZ) was originally formed with Teck of Canada who earned in 76.56%, drilling 54,767 metres between 2007 and 2012 and conducting other geological and geophysical studies, including 18 line kilometres of 2D seismic surveys.

Teck sold their share to Group Eleven Resources Corp. in late 2017. Group Eleven is a Canadian-listed company with extensive base metal licence holdings in Ireland, backed by Toronto listed MAG Silver Corp. and with a significant holding by Teck Resources. Arkle Resources hold a 23.44% working interest in the Stonepark Zinc Project, and have maintained this share by contributing to the current exploration program.

Group Eleven established a maiden Independent NI43-101 Inferred Resource of 5.1 Mt grading 11.3% combined zinc and lead as outlined below.

Area	Resource Category	Tonnes ('000)	Grades			Metal Content (pounds)		
			Zn (%)	Pb (%)	Zn+Pb (%)	Zn ('000)	Pb ('000)	Zn+Pb ('000)
Stonepark North	Inferred	3,900	9.2	2.9	12.1	790,200	247,600	1,037,800
Stonepark West	Inferred	800	7.1	2.2	9.3	128,000	39,900	167,900
Stonepark	Inferred	400	7.0	1.0	8.0	64,000	9,100	73,100
<b>Total</b>		<b>5,100</b>	<b>8.7</b>	<b>2.6</b>	<b>11.3</b>	<b>982,200</b>	<b>296,600</b>	<b>1,278,800</b>

Summary table of maiden resource at Stonepark Zinc Project, Ireland

Group Eleven are integrating and re-interpreting new and old data and a preliminary drill program has been initiated to provide important 3D geological information for an evolving exploration model at Stonepark. This 'Big Think' strategy is targeting potential deposits associated with, as yet unidentified, structures which may prove proximal to the source of the mineralisation observed at Pallas Green and the Stonepark Inferred Resource.

In addition, the Irish government sponsored Tellus program is currently acquiring airborne geophysical data over the Limerick Basin, including the entire Stonepark block, with data expected available in Q2/Q3 2019. Progress on the acquisition phase of the current Tellus program may be accessed [here](#).